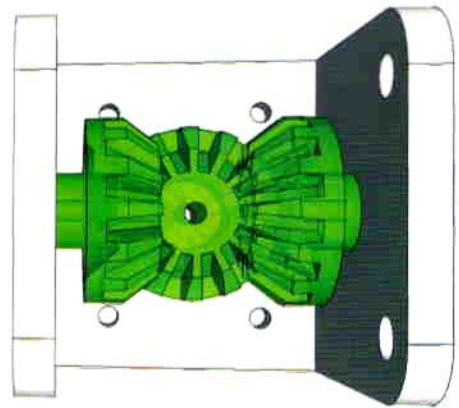
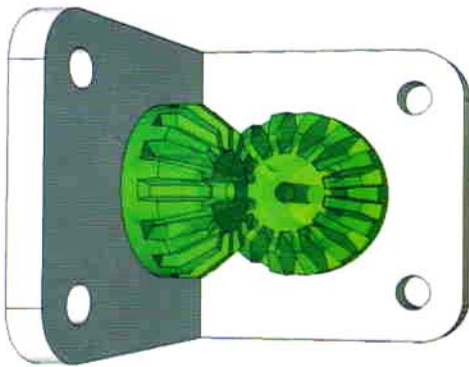


# GENERAL PURPOSE BEVEL GEAR SET



This set of bevel gears is designed for situations where a drive shaft needs to change direction or branch out at 90 degrees. The medium duty bevel gears will press fit onto a 2mm (5/64th) diameter shaft but can be drilled out to suit shafts up to 4mm (5/32nd).

The Aluminium mounting brackets have 2mm holes for the shafts. These must also be drilled to suit the shafts being used.

Kit includes:

- 5x polycarbonate bevel gears
- 1x 2 gear mounting bracket
- 1x 3 gear mounting bracket

