

ATMEL ISP Programmer - USB

USERS GUIDE

make your own
intelligent **embedded** world...

rhydoLABZ™

This is a low cost USB ISP Programmer for ATMEL 89SXXX series Microcontrollers. It does not require extra Power Supply, very easy to use and fast. No need to pull out the microcontroller from the IC Base for programming. Extremely helpful for beginners and experts.

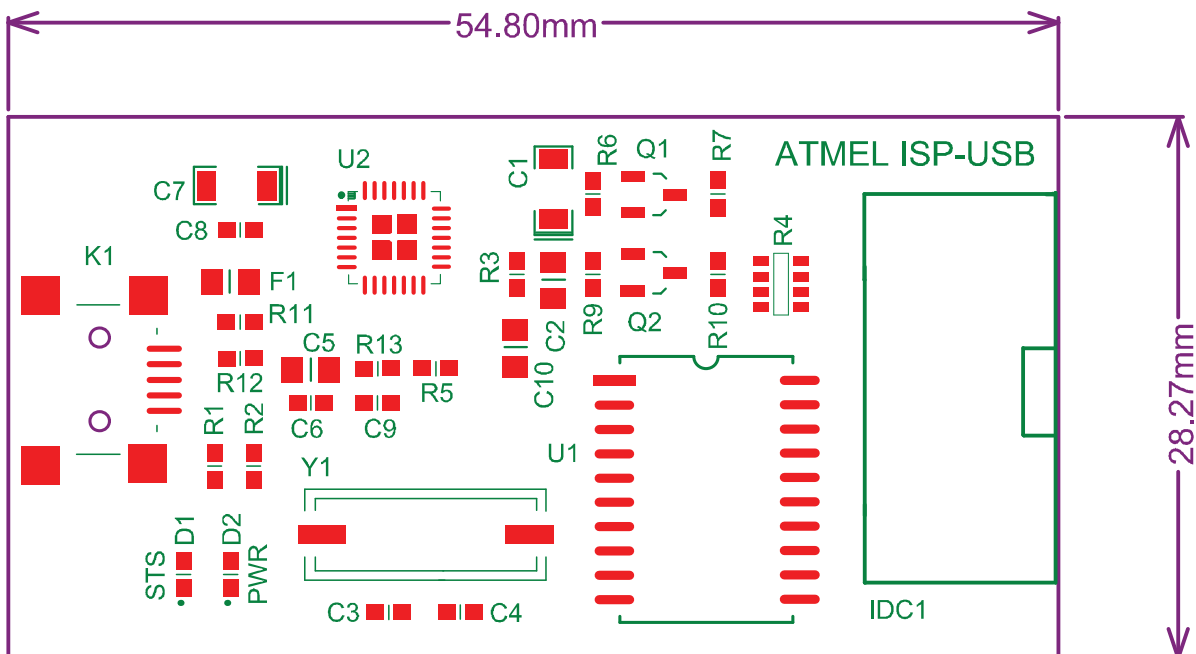
FEATURES

- Compact and Ready to Use design
- High Quality Two layer PTH PCB
- Low Cost
- Powered via interfacing pins
- On Board Power LED Indicator
- On Board USB connector
- Device Supported :
 - » AT89S51
 - » AT89S52
 - » AT89S8252
 - » AT89S8253

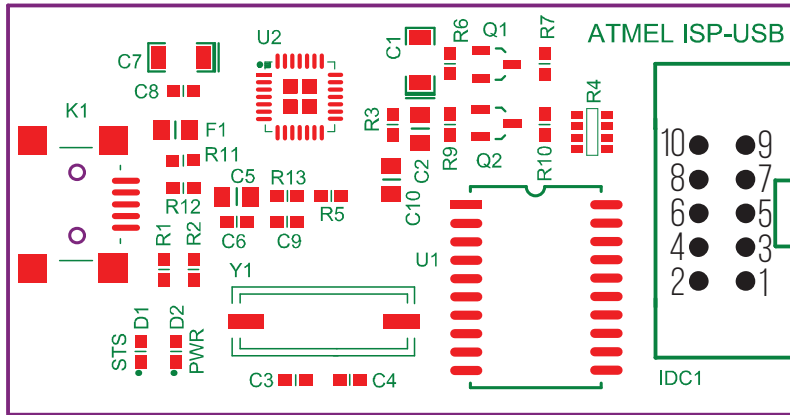
PIN DEFINITIONS

PIN	PIN NAME	DETAILS
MOSI	Master Output	Data Output Pin for Serial Programming
MISO	Master Input	Data Input Pin for Serial Programming
SCK	Serial Clock	Clock Output Pin for Serial Programming
VCC	Power Supply	Power Supply Input
GND	Ground	Ground Level of Power supply
RESET	Reset Input	This pin is used to produce a low level output longer than the minimum pulse length to generate a Reset in the target board.

DIMENSIONS

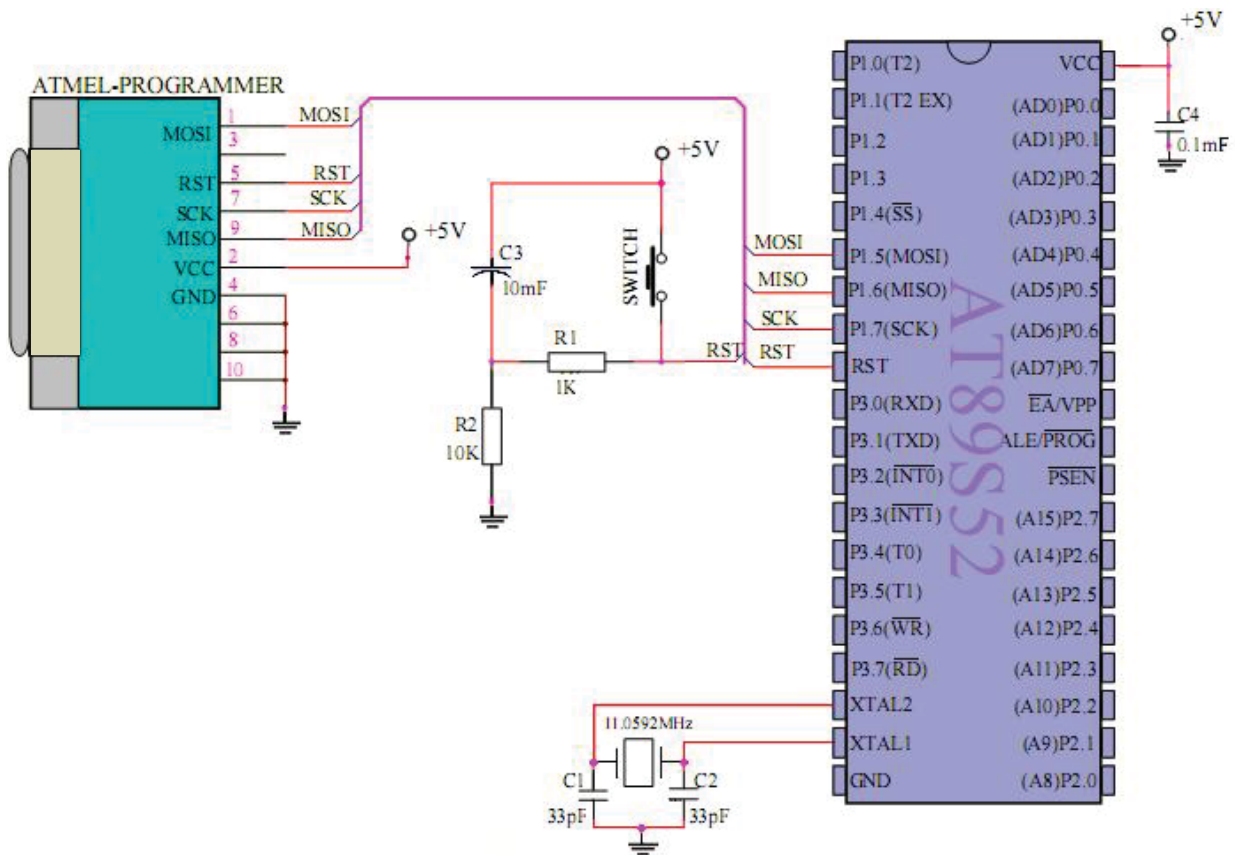


ORDER OF PINS



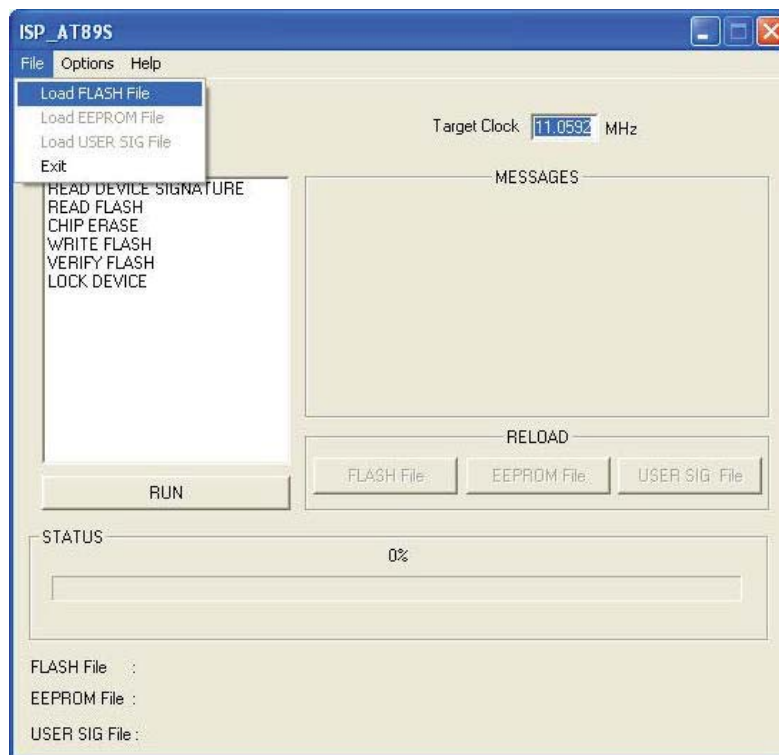
INTERFACING WITH MICROCONTROLLERS

➤ Below is an example of interfacing the ATMELESP-USB programmer board with Atmel AT89S52 microcontroller.



PROGRAMMING PROCEDURE

- Make sure that the Atmel Programmer board is connected via USB to your computer and that the board is turned on. Connect the other end of the board to the target board.
- Run the ISP_AT89S.exe.



- Open the Hex file to be programmed by selecting “**Load FLASH File**” from the “**File**” menu.
- Select the Target clock frequency.
- Select the ‘**CHIP ERASE**’ option first. Then Click the ‘**RUN**’ button.
- Now Select the ‘**WRITE FLASH**’ option and click the ‘**RUN**’ button.
- After programming is completed, the Target board can be disconnected from the Programmer.



TECHNICAL SUPPORT

If you are experiencing a problem that is not described in this manual, please contact us. Our phone lines are open from 9:00 AM – 5:00 PM (Indian Standard Time) Monday through Saturday excluding holidays. Email can be sent to support@rhydolabz.com

DISCLAIMER

Copyright © Rhydo Technologies (P) Ltd.

All rights are reserved. Reproduction in whole or in part is prohibited without the prior written consent of the copyright owner. The information presented in this document does not form part of any quotation or contract, is believed to be accurate and reliable and may be changed without notice.

Contact Us

Rhydo Technologies (P) Ltd.

(An ISO 9001:2008 Certified R&D Company)

Golden Plaza, Chittoor Road, Cochin – 682018, Kerala, India.

Tel: 0091 484 2370 444, 2371 666, Cell: 0091- 99466 70444

Fax: 0091 484 237 0579, Email: info@rhydolabz.com, sales@rhydolabz.com

For more information please visit: www.rhydolabz.com

